

CHARLAND THERMOJET INC

Mixing units, wash down and hoses station

16350 blv. Gouin Ouest, Ste-Geneviève, Québec H9H 1E1

Toll free : 1-800-624-4709 (514)624-4772 Fax : 624-4776

Email : info@charlandthermojet.com Web: www.charlandthermojet.com



1

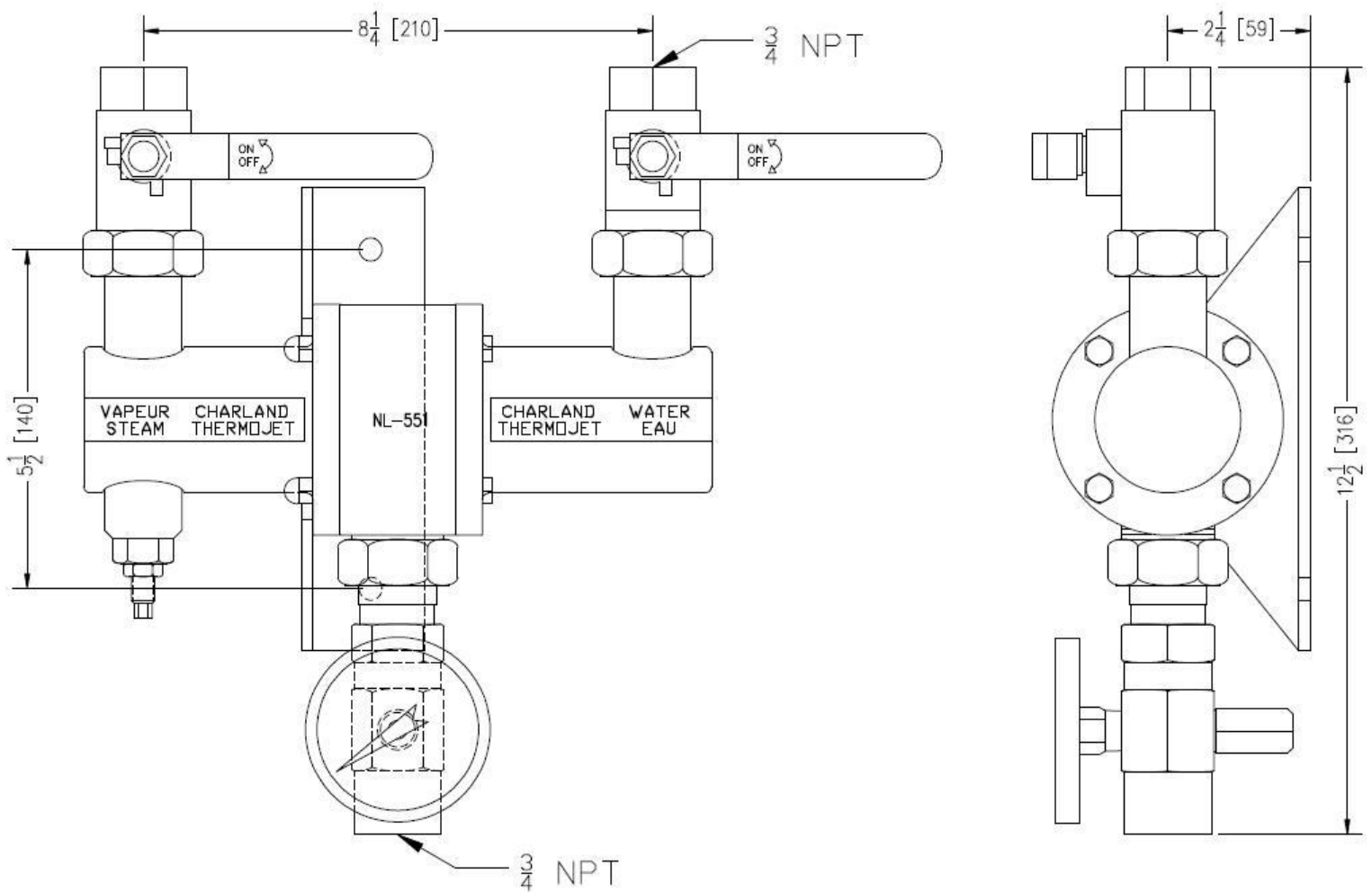
MIXING UNITS AND HOSES STATIONS
STEAM AND COLD WATER
NL-551 SERIES

NL-551-TM-BV MODEL, MIXING UNIT ONLY

STEAM AND COLD WATER MIXER WITH BALL VALVES

NL-551-TM-BV model wall mounted. Mixes steam with cold water for answering your needs in hot water. Ideal for many types of cleaning tasks in any industrial plant equipped with a boiler. This mixer can be adjusted for different degrees of hot water. Rapid and easy to use.

Unit & hose : for use with STEAM and cold WATER only.



NL-551-TM-BV

STEAM AND COLD WATER MIXER WITH BALL VALVE

FEATURES

- New : External adjustment for the control of the entrance of steam allowing to obtain easily and quickly the desired exit temperature.
- Maximum operating pressure : 150 PSI (1034 kPa).
- Maximum operating temperature : 200°F (93°C).
- Required steam pressure : 40 to 125 PSI (276 to 862 kPa).
- Required water pressure : 50 to 80 PSI (345 to 552 kPa).
- High quality ball valve made of stainless steel.
- Body made of brass with internal part made of stainless steel.
- Integrated check valve.
- Temperature gauge made of stainless steel with a plastic cover to reduce risk of injuries.

OPTIONS

- High quality (FDA) 2 ply reinforced hose good for up to 150 PSI (1034 kPa) at 200°F (93°C).
- Different models of unions.
- Automatic gun for small or wide open water jet.
- Stainless steel hose rack for wall mounting.
- Hose reels.
- Embedded or on-surface stainless steel case.
- **All stainless steel units also available.**

For more information or any questions please contact us.

WORKING CONDITIONS FOR NL-551 MIXERS

WORKING CONDITIONS FOR NL-551				
STEAM	WATER	TEMPERATURE		FLOW RATE
		Min.	Max.	
70 PSI (482.6 kPa)	50 PSI (344.7 kPa)	130°F (54°C)	180°F (82°C)	3 GPM (11.4 l/min) À 8 GPM (30.3 l/min)
80 PSI (551.6 kPa)	50 PSI (344.7 kPa)	145°F (63°C)	200°F (93°C)	
125 PSI (861.8 kPa)	100 PSI (689.5 kPa)	170°F (77°C)	200°F (93°C)	

WARNING, DO NOT EXCEED THESE LIMITS

Normal working procedure

Getting started

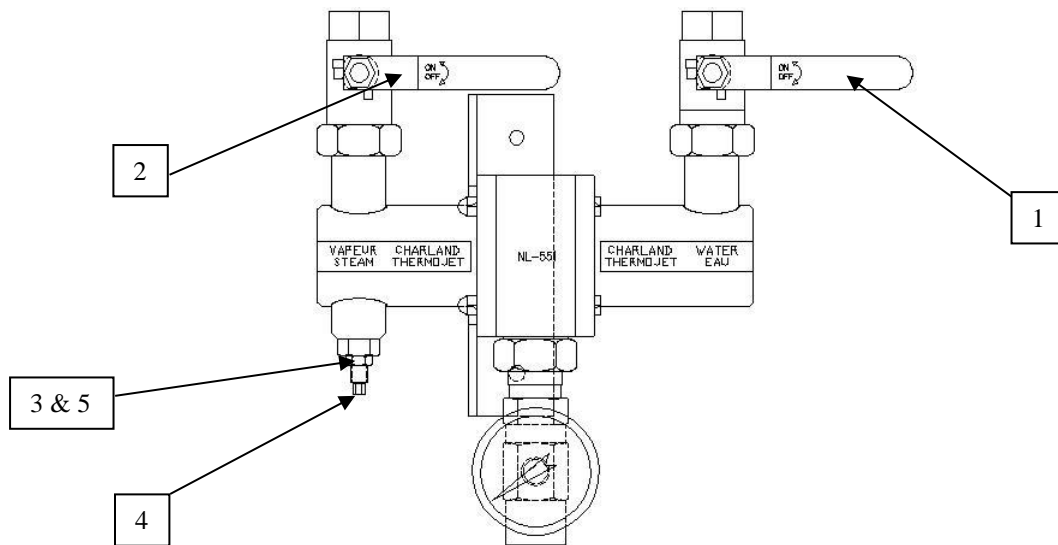
1. Open the cold water valve to its maximum and keep the nozzle gun wide open.
2. Open very slowly the steam valve to its maximum and maintain the nozzle gun wide open. This allows eliminating the water condensed in the steam line in a secure way.
3. If needed, slowly close the cold water valve to obtain the desired exit temperature while keeping the nozzle gun wide open.
4. These three operations completed, you are ready to use the mixer and the temperature will remain at the adjusted degree, as long as there will be no variation in the lines of water and vapor.

Closing

1. Slowly close the steam valve.
2. Close the cold water valve while maintaining the nozzle gun wide open to empty the mixer and the hose completely.

NL-551 MIXER STARTING PROCEDURE AND ADJUSTMENT

1. Open the cold water valve to its maximum and keep the nozzle gun wide open.
2. Open very slowly the steam valve to its maximum and maintain the nozzle gun wide open. This allows elimination of the water condensed in the steam line in a secure way.
3. With a 9/16" key unbolt the bolt of tightening of the adjustment shaft.
4. Use a 1/4" key to turn the adjustment shaft. Turn slowly to the left to increase the flow of steam to increase the temperature of the exit water. Or, turn slowly to the right to decrease the flow of steam and reduce the temperature of the exit water. *During this adjustment, it is important to maintain the pistol jet in wide open function as well as the valve of steam and cold water completely opened.
5. When the desired exit temperature is reached (maximum 200 °F (93 °C)), simply lock the adjustment shaft by tightening the bolt with the 9/16" key.
6. These five operations completed, you are ready to use the mixer and the temperature will remain at the adjusted degree. ** The temperature can vary afterwards if the flow of cold water and/or if its temperature changes. A variation in the pressure of steam can also have the same effect for the exit temperature.



CHARLAND THERMOJET INC

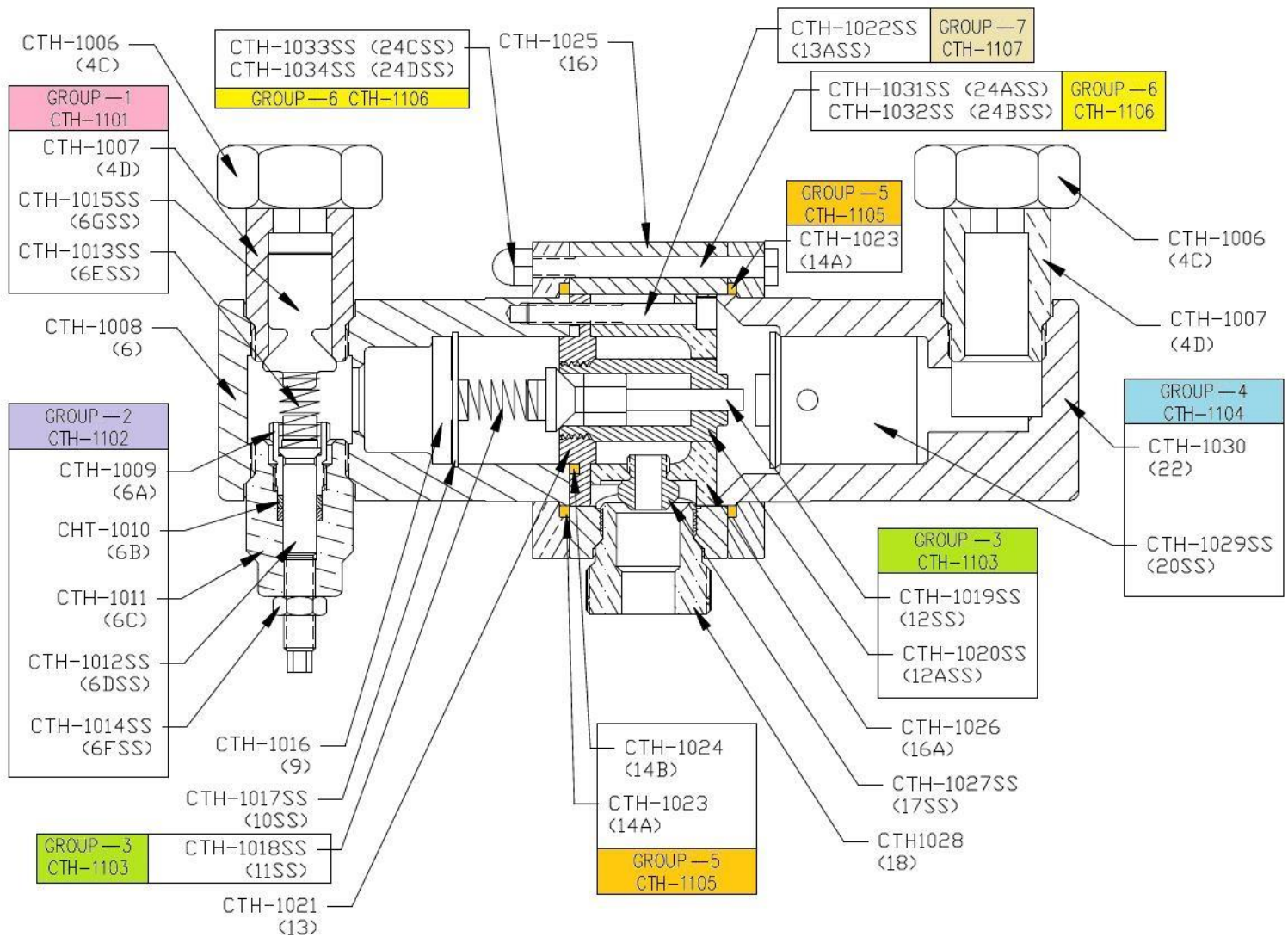
Mixing units, wash down and hoses station

16350 blv. Gouin Ouest, Ste-Geneviève, Québec H9H 1E1

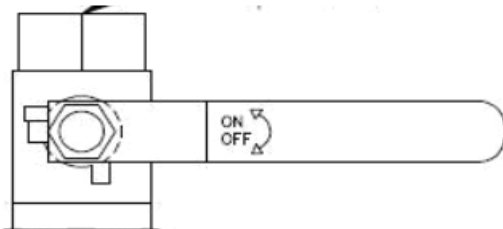
Toll free : 1-800-624-4709 (514)624-4772 Fax : 624-4776

Email : info@charlandthermojet.com Web : www.charlandthermojet.com

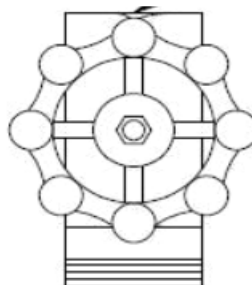
PARTS AND DETAILS FOR THE NL-551 MIXER



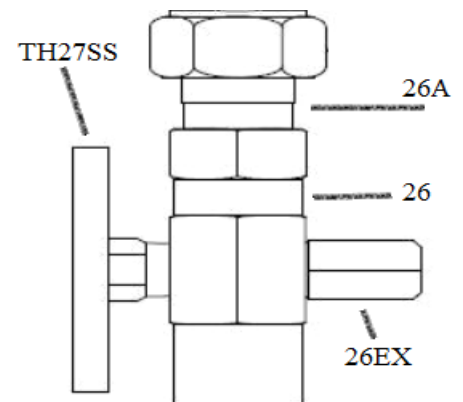
CTH-1001SS
(4BVSS)



CTH-1002-SS
(4GVSS)



CTH-1036 ASSEMBLED



CHARLAND THERMOJET INC

Mixing units, wash down and hoses station

16350 blv. Gouin Ouest, Ste-Geneviève, Québec H9H 1E1

Toll free : 1-800-624-4709 (514)624-4772 Fax : 624-4776

Email : info@charlandthermojet.com Web: www.charlandthermojet.com

NL-551 MIXER PART LIST

P/N :	REF.	DESCRIPTION	MATERIAL
CTH-1001SS	4BVSS	UNION TYPE GLOBE VALVE	STAINLESS STEEL
CTH-1002SS	4GVSS	UNION TYPE BALL VALVE	STAINLESS STEEL
CTH-1003	4AG	GASKET	GRAPHITE
CTH-1006	4C	JOINT NUT	BRASS
CTH-1007	4D	INLET JOINT	BRASS
CTH-1008	6	STEAM ELBOW	BRASS
CTH-1009	6A	COMPRESSION BOLT	BRASS
CTH-1010	6B	VALVE PACKING	TEFLON
CTH-1011	6C	ADJUSTMENT CASING	BRASS
CTH-1012SS	6DSS	ADJUSTMENT SHAFT	STAINLESS STEEL
CTH-1013SS	6ESS	RETAINING VALVE SPRING	STAINLESS STEEL
CTH-1014SS	6FSS	BLOCKING NUT	STAINLESS STEEL
CTH-1015SS	6GSS	CHECK VALVE	STAINLESS STEEL
CTH-1016	9	SPRING SUPPORT	BRASS
CTH-1017SS	10SS	INTERNAL HOLDING WASHER	STAINLESS STEEL
CTH-1018SS	11SS	STEAM VALVE SPRING	STAINLESS STEEL
CTH-1019SS	12SS	STEAM VALVE	STAINLESS STEEL
CTH-1020SS	12ASS	STEAM VALVE SEAT	STAINLESS STEEL
CTH-1021	13	STEAM CASING	BRASS
CTH-1022SS	13ASS	INTERNAL CASING SCREW	STAINLESS STEEL
CTH-1023	14A-AF	STEAM ELBOW GASKET 1	AFLAS
CTH-1024	14B-AF	STEAM ELBOW GASKET 2	AFLAS
CTH-1025	16	EXTERNAL CASING	BRASS
CTH-1026	16A	INTERNAL CASING	BRASS
CTH-1027SS	17SS	STEAM JET	STAINLESS STEEL
CTH-1028	18	OUTLET JOINT	BRASS
CTH-1029SS	20SS	PISTON	STAINLESS STEEL
CTH-1030	22	WATER ELBOW	BRASS
CTH-1031SS	24ASS	3-1/4 INCH BOLT	STAINLESS STEEL
CTH-1032SS	24BSS	3 INCH BOLT	STAINLESS STEEL
CTH-1033SS	24CSS	NUT	STAINLESS STEEL
CTH-1034SS	24DSS	WASHER	STAINLESS STEEL
CTH-1035	26A	INLET UNION	BRASS
CTH-1036	26	OUTLET PIPE	BRASS
CTH-1037	26EX	EXTENSION PIPE	BRASS
CTH-1038SS	TH27SS	THERMOMETER (PLASTIC WINDOW)	STAINLESS STEEL
CTH-1039SS	28SS	SUPPORT FOR UNIT	STAINLESS STEEL

CHARLAND THERMOJET INC

Mixing units, wash down and hoses station

16350 blv. Gouin Ouest, Ste-Geneviève, Québec H9H 1E1

Toll free : 1-800-624-4709 (514)624-4772 Fax : 624-4776

Email : info@charlandthermojet.com Web: www.charlandthermojet.com

REPARATION GROUP FOR THE NL-551 MIXER

P/N :	REF.	QTY.	DESCRIPTION
<u>GROUP 1</u>	<u>CTH-1101</u>		COMPOSANTES DE LA SOUPAPE DE RETENUE À VAPEUR (CES PIÈCES DOIVENT ÊTRE REMPLACÉES ENSEMBLES)
CTH-1007	4D	1	INLET JOINT
CTH-1013SS	6ESS	1	CHECK VALVE SPRING
CTH-1015SS	6GSS	1	CHECK VALVE
<u>GROUP 2</u>	<u>CTH-1102</u>		STEAM INLET AJUSTMENT PART (FACTORY ASSEMBLED)
CTH-1009	6A	1	COMPRESSION BOLT
CTH-1010	6B	1	VALVE PACKING
CTH1011	6C	1	ADJUSTMENT CASING
CTH1012SS	6DSS	1	ADJUSTMENT SHAFT
CTH1014SS	6FSS	1	BLOCKING NUT
<u>GROUP 3</u>	<u>CTH-1103</u>		STEAM INJECTION VALVE PARTS (THOSE PARTS MUST BE REPLACED TOGETHER AND GROUP 3 REPLACEMENT REQUIRE GROUP 5)
CTH-1018SS	11SS	1	STEAM VALVE SPRING
CTH-1019SS	12SS	1	STEAM VALVE
CTH-1020SS	12ASS	1	STEAM VALVE SEAT
<u>GROUP 4</u>	<u>CTH-1104</u>		WATER ADMISSION PISTON AND CYLINDER (GROUP 4 REPLACEMENT REQUIRE GROUP 5)
CTH-1029SS	20SS	1	PISTON
CTH-1030	22	1	WATER ELBOW
<u>GROUP 5</u>	<u>CTH-1105</u>		COMPLETE GASKET SET
CTH-1003	AG	3	GASKET
CTH-1010	6B	1	LEAK PACKING
CTH-1023	14A-AF	2	STEAM ELBOW GASKET
CTH-1024	14B-AF	1	INTERNAL STEAM GASKET
<u>GROUP 6</u>	<u>CTH-1106</u>		EXTERNAL BOLT
CTH-1031SS	24ASS	2	3-1/4 INCH BOLT
CTH-1032SS	24BSS	2	3 INCH BOLT
CTH1033	24CSS	4	NUT
CTH-1034	24DSS	4	WASHER
<u>GROUP 7</u>	<u>CTH-1107</u>		INTERNAL CASIBG SCREW
CTH-1022SS	13ASS	3	SCREW
<u>GROUP 8</u>	<u>CTH-1108</u>		INLET AND OUTLET UNION NUT
CTH-1006	4C	2	JOINT NUT

CHARLAND THERMOJET INC

Mixing units, wash down and hoses station

16350 blv. Gouin Ouest, Ste-Geneviève, Québec H9H 1E1

Toll free : 1-800-624-4709 (514)624-4772 Fax : 624-4776

Email : info@charlandthermojet.com Web: www.charlandthermojet.com

REPARATION KIT FOR THE NL-551 MIXER

P/N :	REF.	QTY.	DESCRIPTION
<u>CTH-1201</u>	<u>KIT-01</u>		LEAKS REPARATION KIT
CTH-1010	6B	1	VALVE PACKING
GROUP 5	CTH-1105	1	COMPLETE GASKET SET
P/N :	REF.	QTY.	DESCRIPTION
<u>CTH-1202</u>	<u>KIT-02</u>		INLET REPARATION KIT
GROUP 1	CTH-1101	1	STEAM HOLDING VALVE PART
GROUP 2	CTH-1102	1	STEAM INLET AJUSTMENT PART (FACTORY ASSEMBLED)
P/N :	REF.	QTY.	DESCRIPTION
<u>CTH-1203</u>	<u>KIT-03</u>		STEAM VALVE REPARATION KIT
GROUP 3	CTH-1103	1	STEAM INJECTION VALVE PART
GROUP 5	CTH-1105	1	COMPLETE GASKET SET
P/N :	REF.	QTY.	DESCRIPTION
<u>CTH-1204</u>	<u>KIT-04</u>		COMPLETE REBUILT KIT (*GROUP 4 IS FACULTATIVE) WATER ELBOW AND HIS PISTON ARE VERY RESISTANT AND CAN HANDLE SEVERAL REBUILT BEFORE REPLACEMENT IS NEEDED.
GROUP 1	CTH-1101	1	STEAM HOLDING VALVE PART
GROUP 2	CTH-1102	1	STEAM INLET AJUSTMENT PART (FACTORY ASSEMBLED)
GROUP 3	CTH-1103	1	STEAM INJECTION VALVE PART
GROUP 5	CTH-1105	1	COMPLETE GASKET SET
P/N :	REF.	QTY.	DESCRIPTION
<u>CTH-1205</u>	<u>KIT-05</u>		TOTAL REBUILT KIT
GROUP 1	CTH-1101	1	STEAM HOLDING VALVE PART
GROUP 2	CTH-1102	1	STEAM INLET AJUSTMENT PART (FACTORY ASSEMBLED)
GROUP 3	CTH-1103	1	STEAM INJECTION VALVE PART
GROUP 4	CTH-1104	1	WATER ADMISSION PISTON AND CYLINDER
GROUP 5	CTH-1105	1	COMPLETE GASKET SET

CHARLAND THERMOJET INC

Mixing units, wash down and hoses station

16350 blv. Gouin Ouest, Ste-Geneviève, Québec H9H 1E1

Toll free : 1-800-624-4709 (514)624-4772 Fax : 624-4776

Email : info@charlandthermojet.com Web: www.charlandthermojet.com

NL-551 MODEL IMPERIAL TECH DATA

Here are the technical data of the approximative consumption of vapor of the mixer according to the desired exit temperature and the flow rate of cold water. The following results are calculated by taking into account a temperature of cold water of 40 °F (4.5 °C).

NL-551 station with M-70 nozzle gun and a steam pressure of 60 lb/po²

Exit water flow rate (GPM)	Exit water temperature (Celsius)	Exit water temperature (Fahrenheit)	Steam consumption (lbs/hr)
Cold water 50-60 PSI			
5	60	140	276
5	70	158	326
5	80	176	375
5	90	194	425
Cold water 60-70 PSI			
6	60	140	331
6	70	158	391
6	80	176	450
6	90	194	510
Cold water 70-80 PSI			
7	60	140	386
7	70	158	456
7	80	176	525
7	90	194	595

NL-551 station with M-70 nozzle gun and a steam pressure of 120 lb/po²

Exit water flow rate (GPM)	Exit water temperature (Celsius)	Exit water temperature (Fahrenheit)	Steam consumption (lbs/hr)
Cold water 50-60 PSI			
5	60	140	287
5	70	158	339
5	80	176	390
5	90	194	442
Cold water 60-70 PSI			
6	60	140	344
6	70	158	406
6	80	176	468
6	90	194	530
Cold water 70-80 PSI			
7	60	140	402
7	70	158	474
7	80	176	546
7	90	194	619

NL-551 MODEL METRIC TECH DATA

Here are the technical data of the approximative consumption of vapor of the mixer according to the desired exit temperature and the flow rate of cold water. The following results are calculated by taking into account a temperature of cold water of 40 °F (4.5 °C).

NL-551 station with M-70 nozzle gun and a steam pressure of 414 kPa

Exit water flow rate (l/min)	Exit water temperature (Celsius)	Exit water temperature (Fahrenheit)	Steam consumption (kg/hr)
Cold water 345-414 kPa			
19	60	140	125
19	70	158	148
19	80	176	170
19	90	194	193
Cold water 414-483 kPa			
23	60	140	150
23	70	158	177
23	80	176	204
23	90	194	231
Cold water 483-552 kPa			
26	60	140	175
26	70	158	207
26	80	176	238
26	90	194	270

NL-551 station with M-70 nozzle gun and a steam pressure of 827 kPa

Cold water flow rate (l/min)	Exit water temperature (Celsius)	Exit water temperature (Fahrenheit)	Steam consumption (kg/hr)
Cold water 345-414 kPa			
19	60	140	130
19	70	158	154
19	80	176	177
19	90	194	200
Cold water 414-483 kPa			
23	60	140	156
23	70	158	184
23	80	176	212
23	90	194	240
Cold water 483-552 kPa			
26	60	140	182
26	70	158	215
26	80	176	248
26	90	194	281

CHARLAND THERMOJET INC

Mixing units, wash down and hoses station

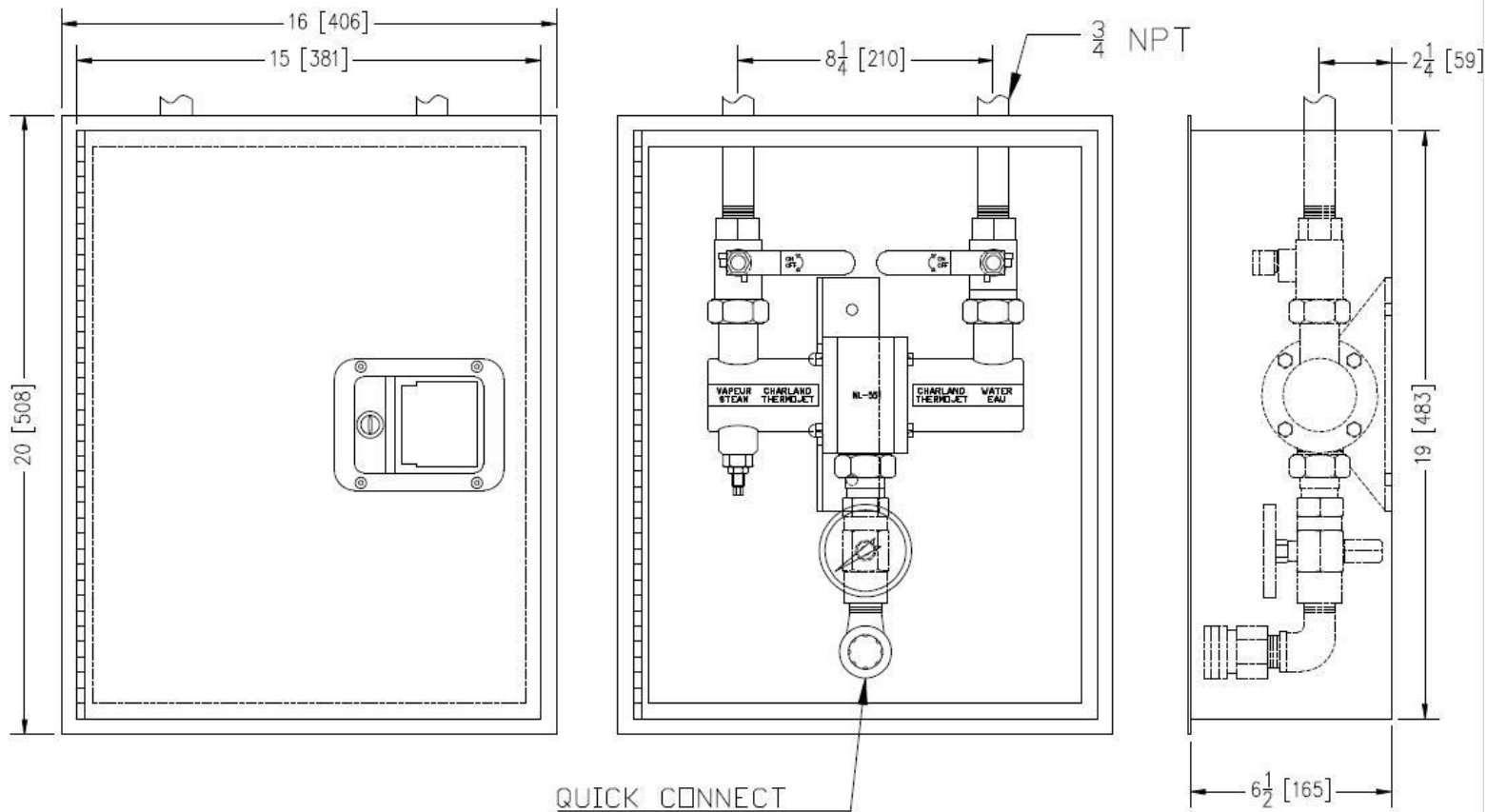
16350 blv. Gouin Ouest, Ste-Geneviève, Québec H9H 1E1

Toll free : 1-800-624-4709 (514)624-4772 Fax : 624-4776

Email : info@charlandthermojet.com Web : www.charlandthermojet.com

NL-551-TM-BV-EC MODEL

STEAM AND COLD WATER MIXER NL-551 STATION WITH BALL VALVES IN A STAINLESS STEEL EMBEDDED CABINET.



FEATURES OF THE CABINET

- Stainless steel cabinet 1/16" with finish #4.
- On-top steam and water inlet.
- Inside exit with a quick connect.
- Welded piano style hinge.
- Stainless steel handle with lock.

CHARLAND THERMOJET INC

Mixing units, wash down and hoses station

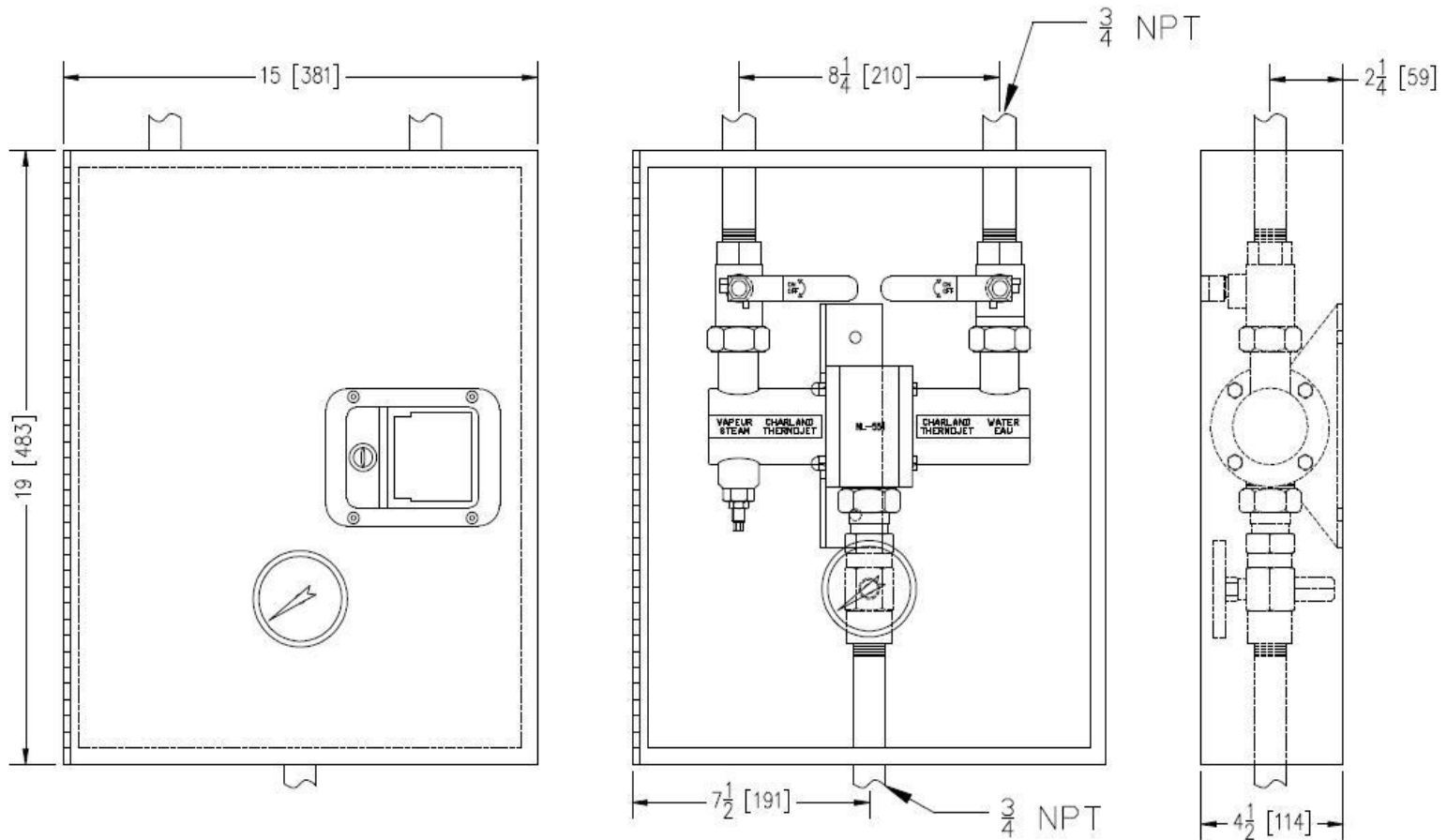
16350 blv. Gouin Ouest, Ste-Geneviève, Québec H9H 1E1

Toll free : 1-800-624-4709 (514)624-4772 Fax : 624-4776

Email : info@charlandthermojet.com Web: www.charlandthermojet.com

NL-551-TM-BV-SR MODEL

STEAM AND COLD WATER MIXER NL-551 STATION WITH BALL VALVES IN A STAINLESS STEEL CABINET FOR ON-SURFACE INSTALLATION.



FEATURES OF THE CABINET

- Stainless steel cabinet 1/16" with finish #4.
- On-top steam and water inlet.
- Exit under the cabinet.
- Welded piano style hinge.
- Stainless steel handle with lock.
- Temperature gage always readable even when the door is closed.

CHARLAND THERMOJET INC

Mixing units, wash down and hoses station

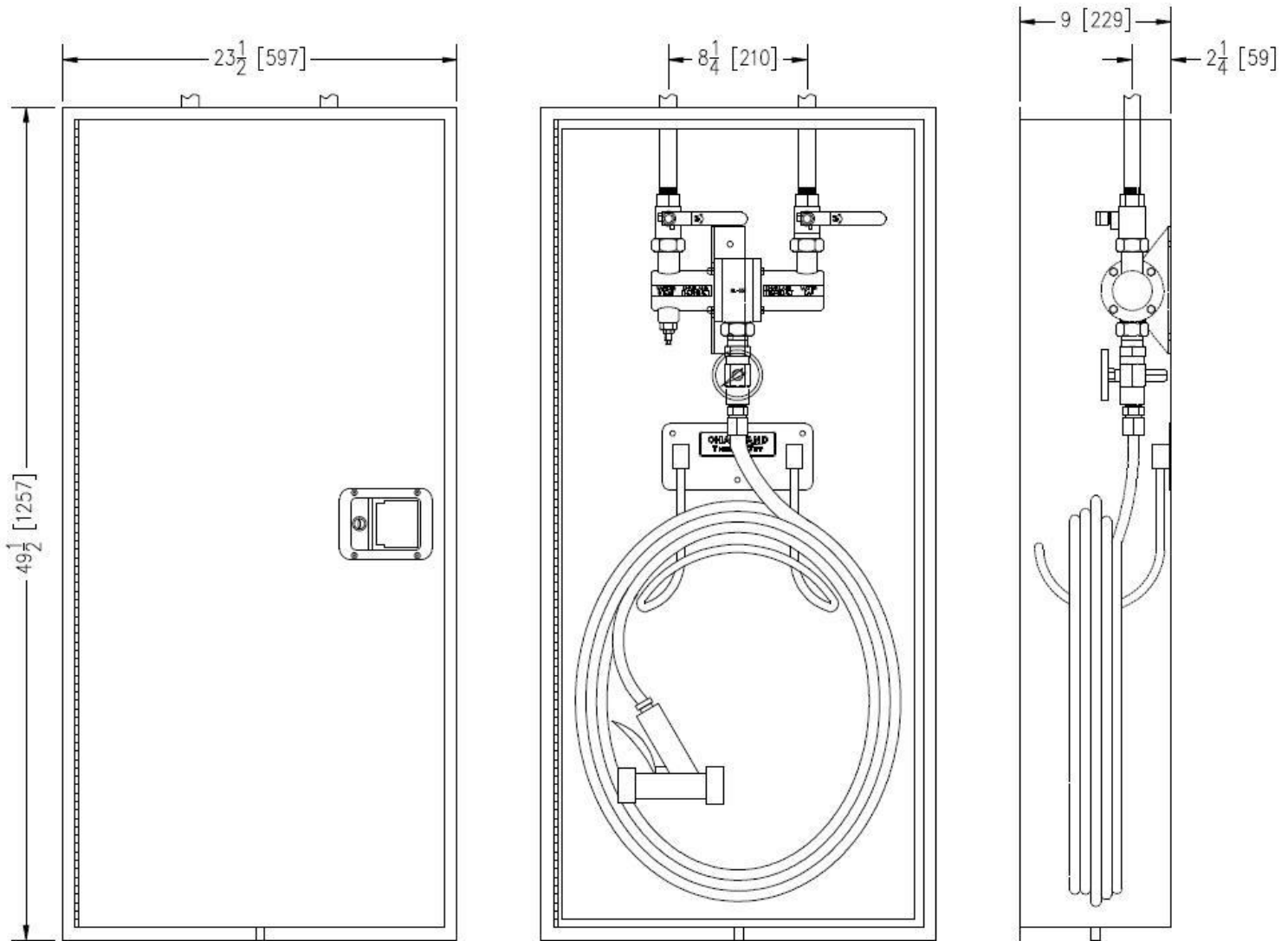
16350 blv. Gouin Ouest, Ste-Geneviève, Québec H9H 1E1

Toll free : 1-800-624-4709 (514)624-4772 Fax : 624-4776

Email : info@charlandthermojet.com Web: www.charlandthermojet.com

NL-551-TM-BV-EC-SC MODEL

STEAM AND COLD WATER MIXER NL-551 WITH BALL VALVES. COMPLETE WASH DOWN STATION WITH HOSE, HOSE RACK AND INDUSTRIAL NOZZLE IN A STAINLESS STEEL EMBEDED CABINET.



FEATURES OF THE CABINET

- Stainless steel cabinet 1/16" with 1/8" door finish # 4.
- On-top steam and water inlet.
- Inside exit with or without quick connect.
- Welded piano style hinge.
- Stainless steel handle with lock.

CHARLAND THERMOJET INC

Mixing units, wash down and hoses station

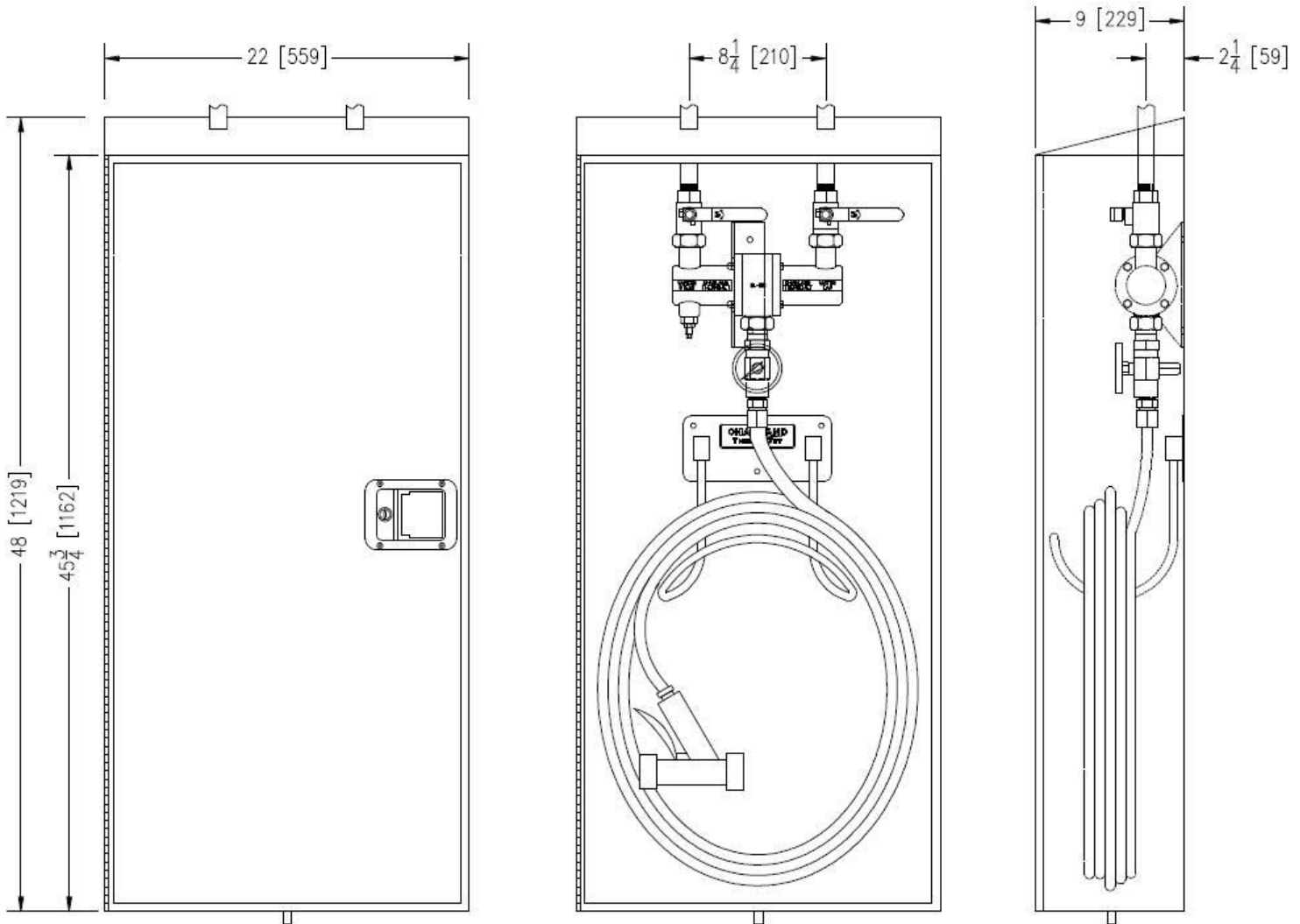
16350 blv. Gouin Ouest, Ste-Geneviève, Québec H9H 1E1

Toll free : 1-800-624-4709 (514)624-4772 Fax : 624-4776

Email : info@charlandthermojet.com Web: www.charlandthermojet.com

NL-551-TM-BV-SR-SC MODEL

STEAM AND COLD WATER MIXER NL-551 WITH BALL VALVES. COMPLETE WASH DOWN STATION WITH HOSE, HOSE RACK AND INDUSTRIAL NOZZLE IN A STAINLESS STEEL CABINET FOR ON-SURFACE INSTALLATION.



FEATURES OF THE CABINET

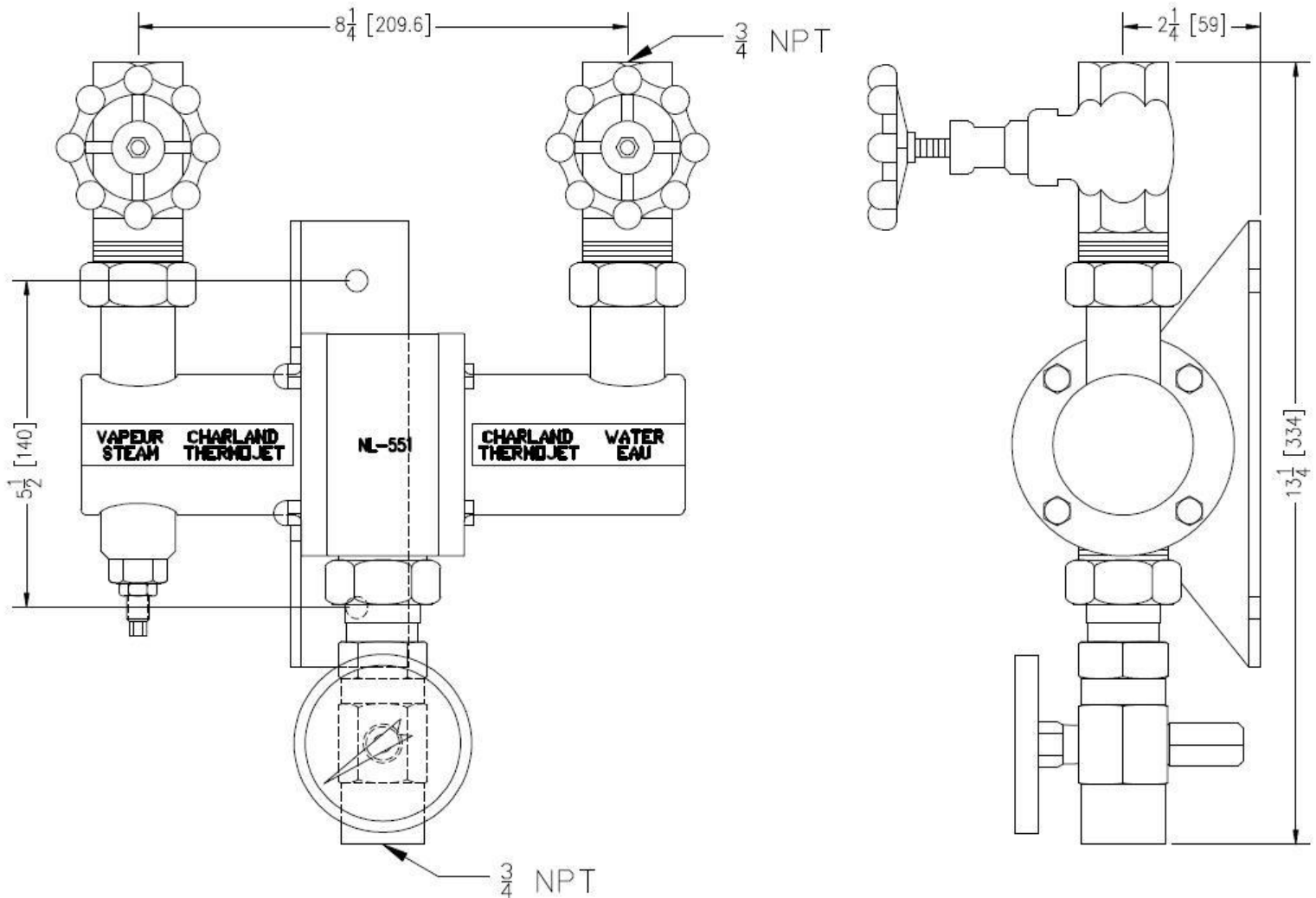
- Stainless steel cabinet 1/16" with 1/8" door finish # 4.
- On-top steam and water inlet.
- Inside exit with or without quick connect.
- Welded piano style hinge.
- Stainless steel handle with lock.

NL-551-TM-GV MODEL, MIXING UNIT ONLY

STEAM AND COLD WATER MIXER WITH GLOBE VALVES

NL-551-TM-GV model wall mounted. Mixes steam with cold water for answering your needs in hot water. Ideal for many type of cleaning tasks in any industrial plant equipped with a boiler. This mixer can be adjusted for different degrees of hot water. Rapid and easy to use.

Unit & hose : for use with STEAM and cold WATER only.



NL-551-TM-GV

STEAM AND COLD WATER MIXER WITH GLOBE VALVES

FEATURES

- Maximum operating pressure : 150 PSI (1034 kPa).
- Maximum operating temperature : 200°F (93°C).
- Required steam pressure : 40 to 125 PSI (276 to 862 kPa).
- Required water pressure : 50 to 80 PSI (345 to 552 kPa).
- High quality globe valve made of brass or stainless steel.
- Body made of brass with internal part made of stainless steel.
- Integrated check valve.
- Temperature gauge made of stainless steel with a plastic cover to reduce risk of injuries.

OPTIONS

- High quality (FDA) 2 ply reinforced hose good for up to 150 PSI (1034 kPa) at 200°F (93°C).
- Different types of unions.
- Automatic gun for small or wide open water jet.
- Stainless steel hose rack for wall mounting.
- Hose reels.
- Embedded or on-surface stainless steel case.
- All stainless steel units also available.

For more information or any questions please contact us.

CHARLAND THERMOJET INC

Mixing units, wash down and hoses station

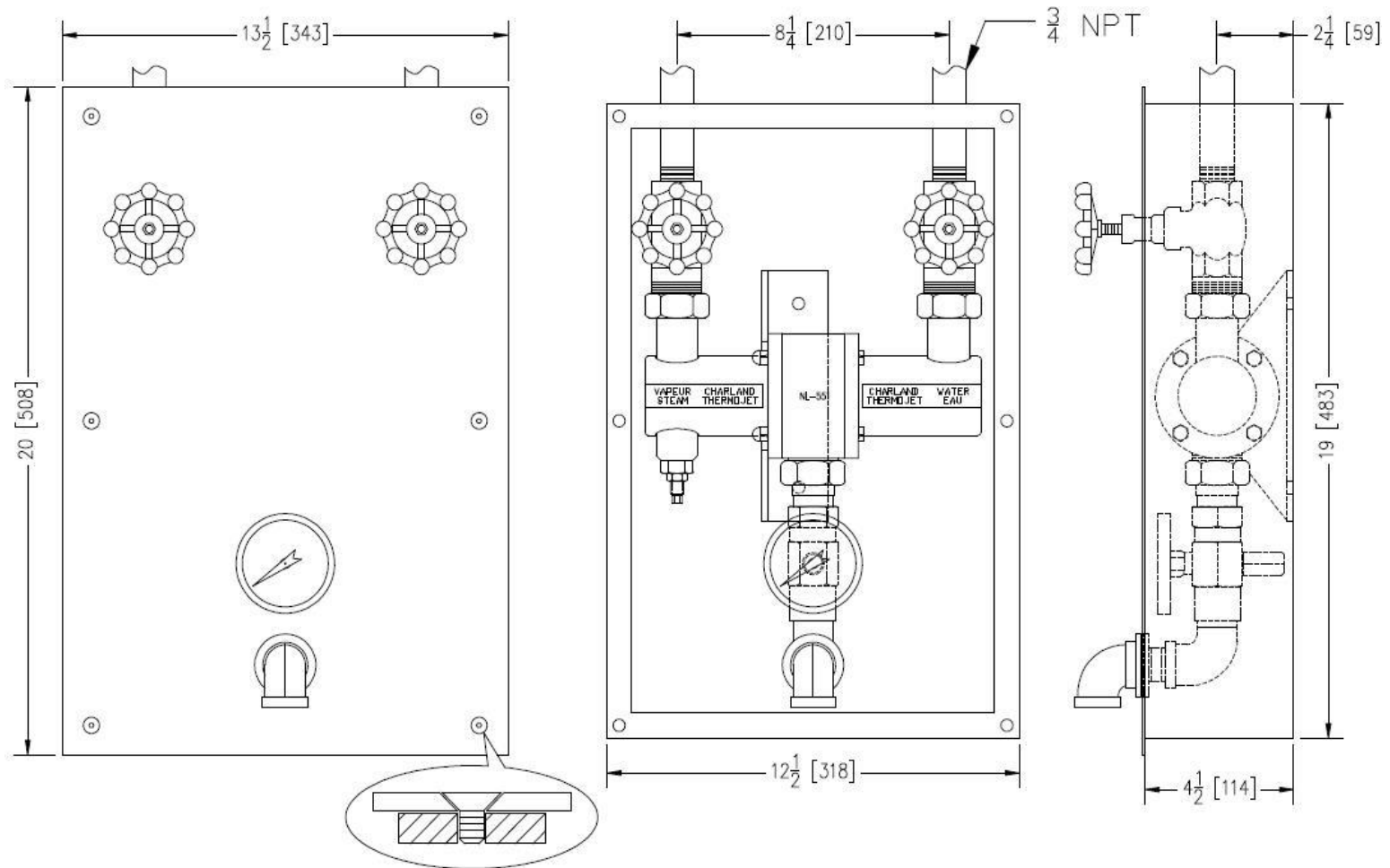
16350 blv. Gouin Ouest, Ste-Geneviève, Québec H9H 1E1

Toll free : 1-800-624-4709 (514)624-4772 Fax : 624-4776

Email : info@charlandthermojet.com Web : www.charlandthermojet.com

NL-551-TM-GV-EC MODEL

STEAM AND COLD WATER MIXER NL-551 STATION WITH GLOBE VALVES IN A STAINLESS STEEL EMBEDDED CABINET.



FEATURES OF THE CABINET

- Stainless steel cabinet 1/16" with 1/8" cover, finish # 4.
- On-top steam and water inlet.
- Front of the cabinet exit.
- No door.
- Temperature gage and valve always reachable.

CHARLAND THERMOJET INC

Mixing units, wash down and hoses station

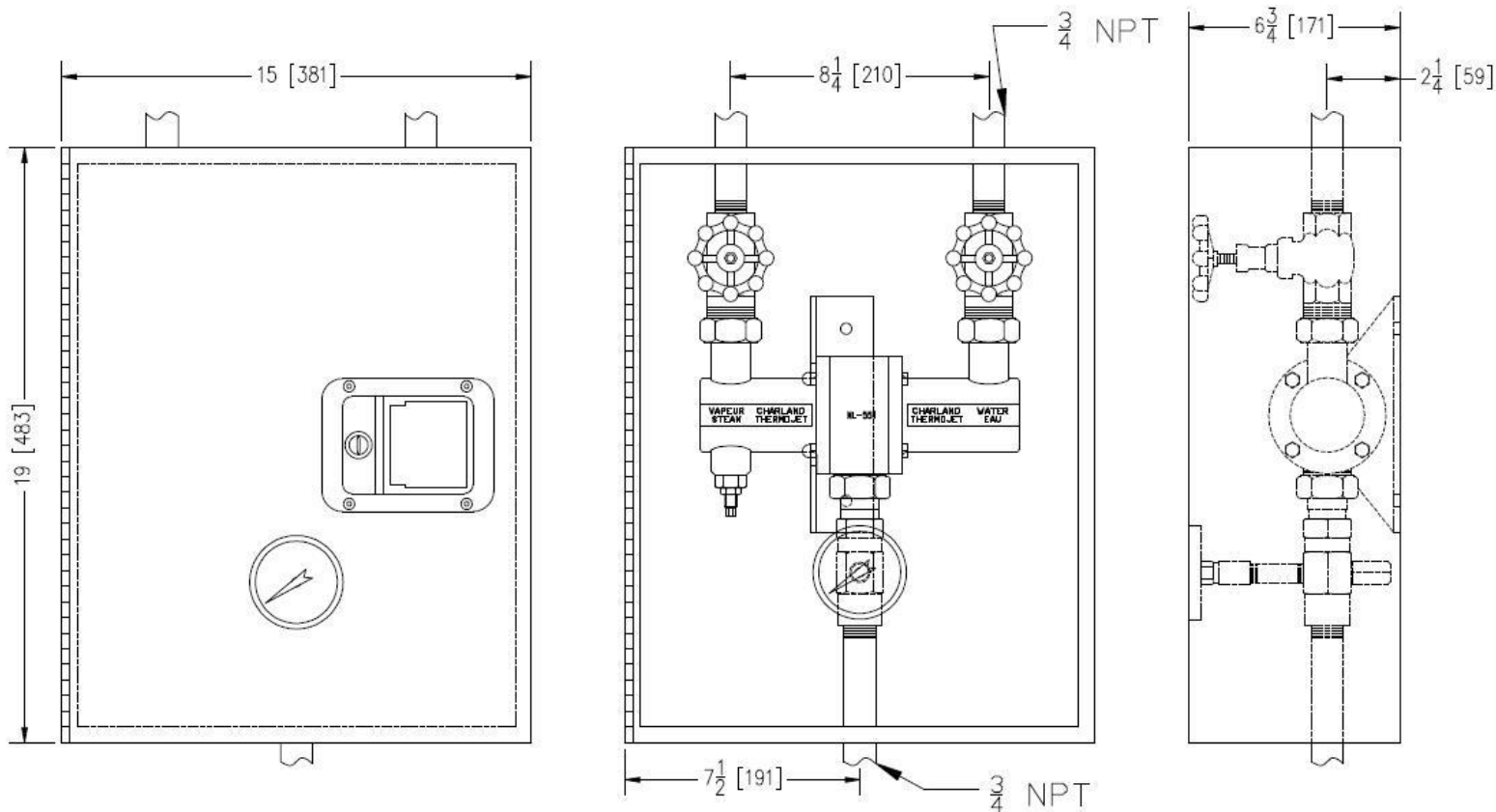
16350 blv. Gouin Ouest, Ste-Geneviève, Québec H9H 1E1

Toll free : 1-800-624-4709 (514)624-4772 Fax : 624-4776

Email : info@charlandthermojet.com Web: www.charlandthermojet.com

NL-551-TM-GV-SR MODEL

STEAM AND COLD WATER MIXER NL-551 STATION WITH BALL VALVES IN A STAINLESS STEEL CABINET FOR ON-SURFACE INSTALLATION.



FEATURES OF THE CABINET

- Stainless steel cabinet 1/16" with finish #4.
- On-top steam and water inlet.
- Exit under the cabinet.
- Welded piano style hinge.
- Stainless steel handle with lock.
- Temperature gage always readable even when the door is closed.

CHARLAND THERMOJET INC

Mixing units, wash down and hoses station

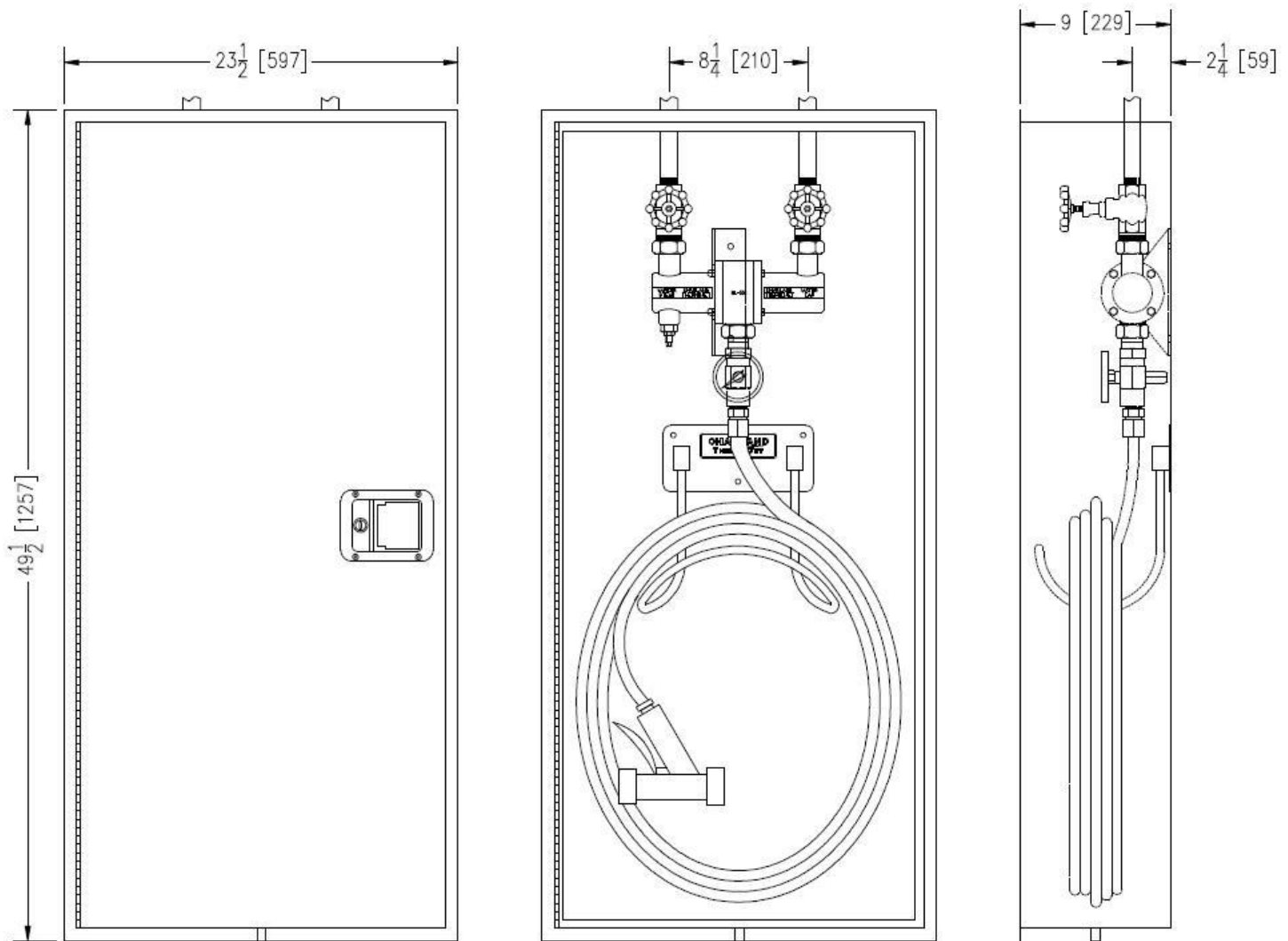
16350 blv. Gouin Ouest, Ste-Geneviève, Québec H9H 1E1

Toll free : 1-800-624-4709 (514)624-4772 Fax : 624-4776

Email : info@charlandthermojet.com Web : www.charlandthermojet.com

NL-551-TM-GV-EC-SC MODEL

STEAM AND COLD WATER MIXER NL-551 WITH BALL VALVES. COMPLETE WASH DOWN STATION WITH HOSE, HOSE RACK AND INDUSTRIAL NOZZLE IN A STAINLESS STEEL EMBEDED CABINET.



FEATURES OF THE CABINET

- Stainless steel cabinet 1/16" with 1/8" door finish # 4.
- On-top steam and water inlet.
- Inside exit with or without quick connect.
- Welded piano style hinge.
- Stainless steel handle with lock.

CHARLAND THERMOJET INC

Mixing units, wash down and hoses station

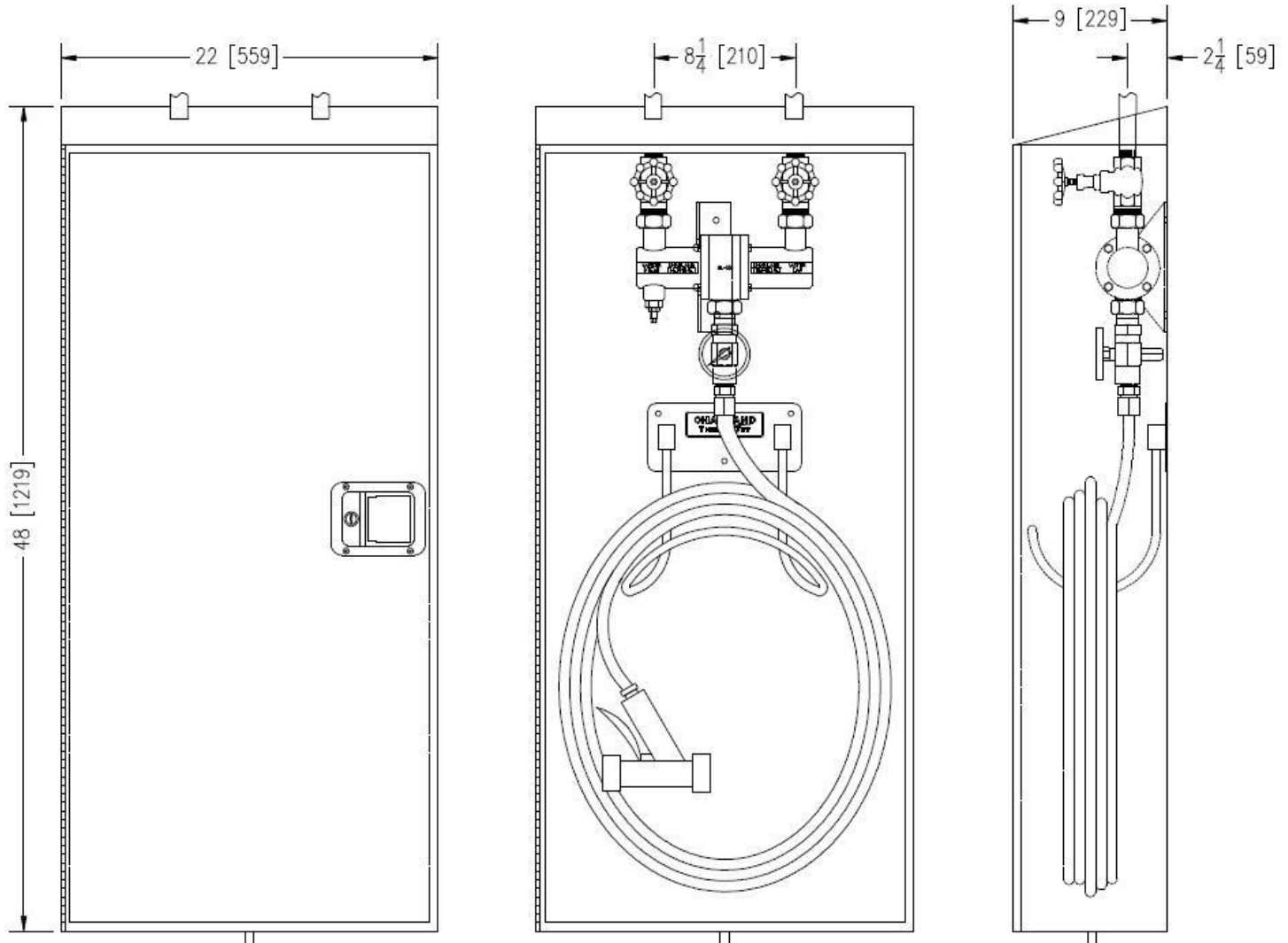
16350 blv. Gouin Ouest, Ste-Geneviève, Québec H9H 1E1

Toll free : 1-800-624-4709 (514)624-4772 Fax : 624-4776

Email : info@charlandthermojet.com Web: www.charlandthermojet.com

NL-551-TM-GV-SR-SC MODEL

STEAM AND COLD WATER MIXER NL-551 WITH BALL VALVES. COMPLETE WASH DOWN STATION WITH HOSE, HOSE RACK AND INDUSTRIAL NOZZLE IN A STAINLESS STEEL CABINET FOR ON-SURFACE INSTALLATION.



FEATURES OF THE CABINET

- Stainless steel cabinet 1/16" with 1/8" door finish # 4.
- On-top steam and water inlet.
- Inside exit with or without quick connect.
- Welded piano style hinge.
- Stainless steel handle with lock.